

T312L



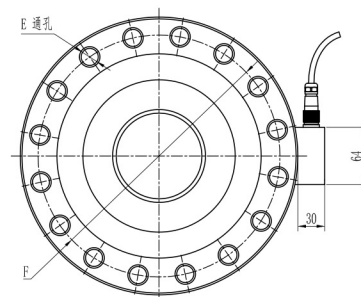
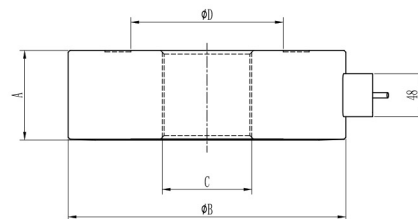
◆ 特点与用途/Features & Applications

- 大量程轮辐式传感器
 - 优质合金钢材料
 - 拉压双向受力
 - 用于试验机, 汽车衡, 料斗秤, 各种工业称重系统等
 - 可定制其它量程
 - 主要应用为汽车压装、自动化组装、3C产品测试、新能源产品组装、医疗检测、机器人领域, 模具组装及其他工业测试, 各类材料试验机, 等测量及控制系统
 - 动态响应频率高
- Pancake type load cell
 - Alloy steel
 - Tension and compression application
 - Mainly used for automotive press-fit, automated assembly, 3C product testing, new energy product assembly, medical testing, robotics, mold assembly and other industrial testing, various material testing machines, and other measurement and control systems
 - High dynamic response frequency

◆ 参数 Specifications 技术指标/Technique

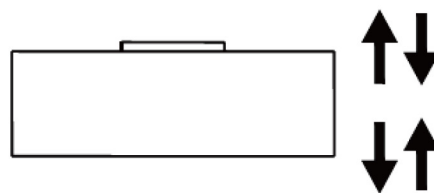
额定容量	Capacity	100,200,250,300,400,500 600,800t
可定制量程	Customizable Capacity	1000,1500,2000,2500,3000t
输出灵敏度	Sensitivity	2.0 ± 1% mV/V
零点输出	Zero balance	± 1% F.S.
非线性	Non-linearity	0.1% F.S.
滞后	Hysteresis	0.1% F.S.
重复性	Repeatability	0.1% F.S.
蠕变 (30min)	Creep(30min)	0.05% F.S.
温度灵敏度漂移	Temp.effect on output	0.05% F.S./10°C
零点温度漂移	Temp.effect on zero	0.05% F.S./10°C
输入电阻	Input impedance	780 ± 20 Ω
输出电阻	Output impedance	700 ± 10 Ω
绝缘电阻	Insulation	≥ 5000 MΩ/100VDC
激励电压	Recommended excitation	5~15V
最大激励电压	Maximum excitation Voltage	20V
温度补偿范围	Compensated temp range	-10~40°C
工作温度范围	Operating temperature range	-10~70°C
安全载荷	Safe load limit	150% F.S.
破坏负载	Breaking load	200% F.S.
电缆线尺寸	Cable size	φ 5 × 6000mm
防护等级	IP Class	IP66

◆ 安装尺寸/Mounting Dimension

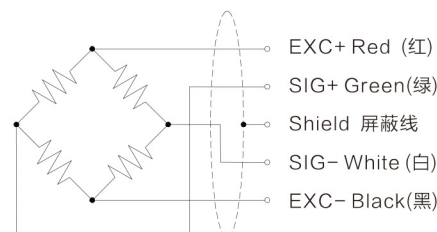


Cap (t)	A	B	C	D	E	F
100	68	268	M72 × 2	122	16-φ17	220
200,250	100	310	M100 × 4	170	16-φ19	270
300	120	390	M120 × 4	200	20-φ21	326
400,500	142	480	M160 × 4	260	20-φ26	400
600,800	148	540	M200 × 4	310	20-φ32	460

◆ 受力方式/Load Direction



◆ 配线图/ Wiring Code



新产品

压向传感器

拉压向传感器

压电力传感器

多维力传感器

称重传感器

张力传感器

螺旋力

扭矩传感器

其它定制力传感器

称重模块

仪表模块放大器